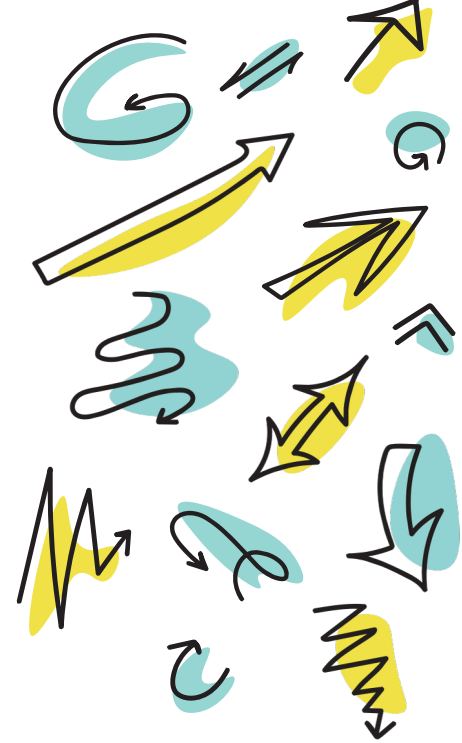




**tutor
doctor**
How learning hits home.

CASE STUDY:
TUTOR DOCTOR PETERBOROUGH'S
SUCCESSFUL PARTNERSHIP WITH
NEALE-WADE ACADEMY





BACKGROUND

In the ever-evolving educational landscape, schools often face challenges in providing tailored support for students with complex needs. Neale-Wade Academy, a secondary school in March, Cambridgeshire, was struggling to find a solution for specific students who required additional support beyond what the school could offer through its internal resources.

Recognising the need for a more personalised approach, the Academy partnered with Tutor Doctor Peterborough, a leading educational service provider specialising in one-to-one tuition. This partnership has spanned four years, delivering substantial success, particularly in helping students reintegrate into mainstream education.

This case study examines the challenges faced by Neale-Wade Academy, the tailored solutions provided by Tutor Doctor Peterborough, and the measurable impact this collaboration has had on the students involved.

THE CHALLENGES FACED BY NEALE-WADE ACADEMY

Neale-Wade Academy approached Tutor Doctor with a specific request: to support a disengaged student who was facing multiple barriers to learning.

The student, who had special educational needs and disabilities (SEND), exhibited behavioural challenges, anxiety, and a lack of engagement with the school environment. Traditional classroom settings were not working for him, and there was a concern that, without intervention, he would continue to fall behind both academically and socially.

The Academy had tried various in-school strategies, but none had fully met the student's needs. It was clear that a more individualised approach was required, both academically and socially, to help the student overcome his challenges and reintegrate into the school community.

UTILISING TUTOR DOCTOR'S TAILORED PROGRAMME

In response to Neale-Wade Academy's request, Tutor Doctor Peterborough developed a personalised programme that focused on the student's unique needs. One of the key elements of this programme was matching the student with a tutor who had significant experience working with learners with similar challenges. It was essential that the tutor build trust and rapport with the student to ensure the programme's success.

To further enhance the student's learning experience, the tuition sessions were held at a local youth centre who Tutor Doctor partners with. This decision was intentional—by moving the sessions outside of the traditional school environment, Tutor Doctor was able to create a space where the student could feel more comfortable and engaged.

The youth centre setting also allowed the integration of activities into the learning process, helping the student to connect academic concepts with practical, real-world applications. The sessions were not solely focused on academic progress; they also incorporated elements of social and emotional development. By integrating these aspects into the tutoring sessions, the student was able to rebuild his confidence, reduce his anxiety, and develop the skills necessary to engage more fully in school life.

SUCCESS METRICS AND MEASURABLE OUTCOMES

The success of the partnership between Tutor Doctor Peterborough and Neale-Wade Academy is best demonstrated through the tangible improvements seen in the student's engagement with school. Over the course of the tuition, the student experienced a significant turnaround in both his academic performance and social integration.

One of the most significant achievements was the student's successful reintegration into mainstream classes. After initially struggling to attend school regularly, he transitioned from working solely online and in therapeutic settings to attending school full-time. His attendance improved, and he began participating in the vast majority of his lessons.

Additionally, the programme sparked a renewed interest in learning for the student. According to James Crawley, Assistant Principal at Neale-Wade Academy, “He has found a love for learning again and is reintegrating back into mainstream classes. This is all thanks to the hard work of his tutor, not only to help him progress academically but the hard work she did with him socially too.”

“ Since working with Tutor Doctor, this student has improved his attendance in school, has gone from working online and at therapeutic centres to attending school full-time and going to the vast majority of his lessons. ”

- JAMES CRAWLEY

Assistant Principal at
Neale-Wade Academy

TESTIMONIALS AND FEEDBACK

The feedback from Neale-Wade Academy highlights the transformative effect of the partnership on the student’s overall school experience. Mr. Crawley’s testimonial underscores the dual impact of the programme, emphasising not just the academic improvements but the equally important social progress the student made:

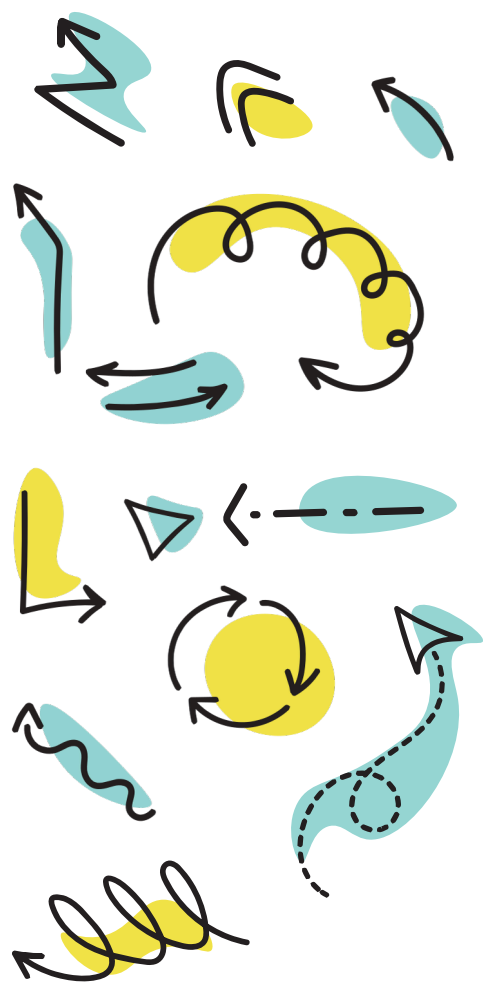
“Since working with Tutor Doctor, this student has improved his attendance in school, has gone from working online and at therapeutic centres to attending school full-time and going to the vast majority of his lessons.”

Such glowing testimonials are reflective of Tutor Doctor’s commitment to a holistic approach to education. By focusing on both academic achievement and personal development, the partnership helped the student to rediscover his passion for learning and to re-engage with his school environment in a meaningful way.

THE BROADER IMPACT OF TUTOR DOCTOR'S APPROACH

The success of this particular partnership between Tutor Doctor Peterborough and Neale-Wade Academy is a testament to the broader approach that Tutor Doctor takes in working with schools across the UK. Tutor Doctor specialises in providing personalised, one-to-one tuition that is tailored to the needs of individual students, especially those who may not thrive in a traditional classroom setting.

One of the key aspects of Tutor Doctor’s success is the careful matching of tutors to students. As seen in the case of Neale-Wade Academy, finding a tutor with the right experience and interpersonal skills was essential in helping the student to re-engage with his education. This careful matching process is a cornerstone of Tutor Doctor’s methodology, ensuring that every student receives the support they need to achieve their full potential.



Additionally, Tutor Doctor's flexibility in delivering tuition—whether in the home, online, or in a neutral space like a youth centre—allows for a more adaptable approach to learning. This flexibility is particularly beneficial for students with SEND, who may require a more individualised learning environment to succeed.

CONCLUSION

The partnership between Tutor Doctor Peterborough and Neale-Wade Academy demonstrates the profound impact that personalised, one-to-one tuition can have on students who face significant barriers to learning.

Through tailored support, a carefully chosen tutor, and a holistic approach that addresses both academic and social needs, Tutor Doctor was able to help a disengaged student rediscover his love for learning and get back to mainstream education.

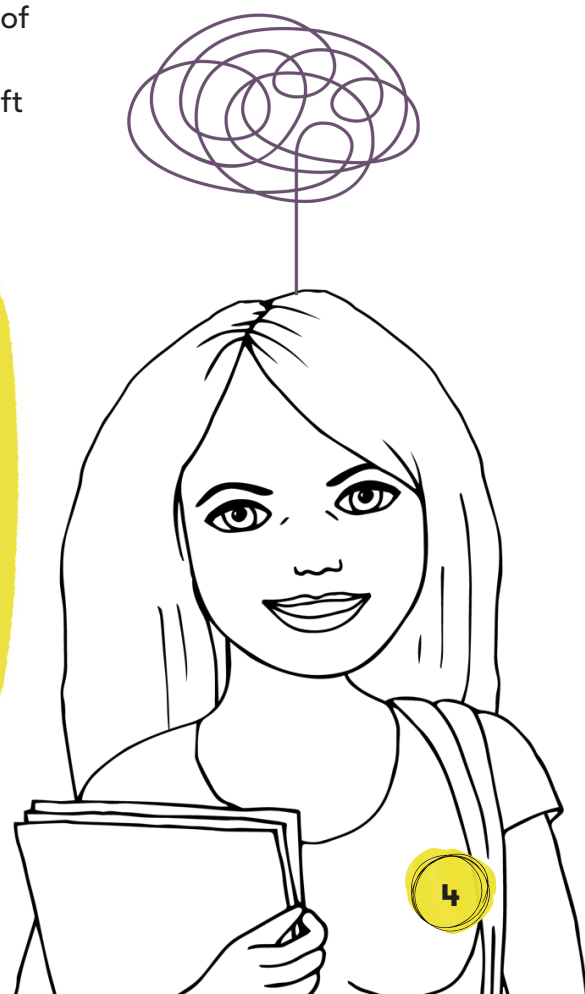
While the partnership may have focused on just one student, the lessons learned and the successes achieved can serve as a model for similar collaborations between schools and Tutor Doctor's services in the future.

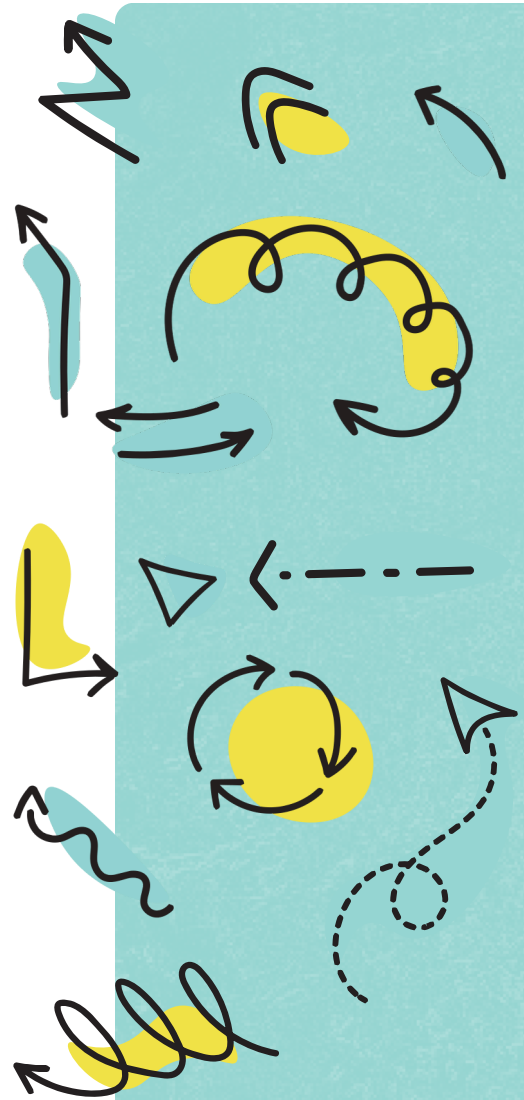
As educational institutions continue to face the challenge of meeting the diverse needs of their students, partnerships like this one will be pivotal in ensuring that no student is left behind.

“He has found a love for learning again and is reintegrating back into mainstream classes. This is all thanks to the hard work of his tutor, not only to help him progress academically but the hard work she did with him socially too.”

- JAMES CRAWLEY

Assistant Principal at
Neale-Wade Academy





**tutor
doctor**

How learning hits home.

tutordocor.co.uk

