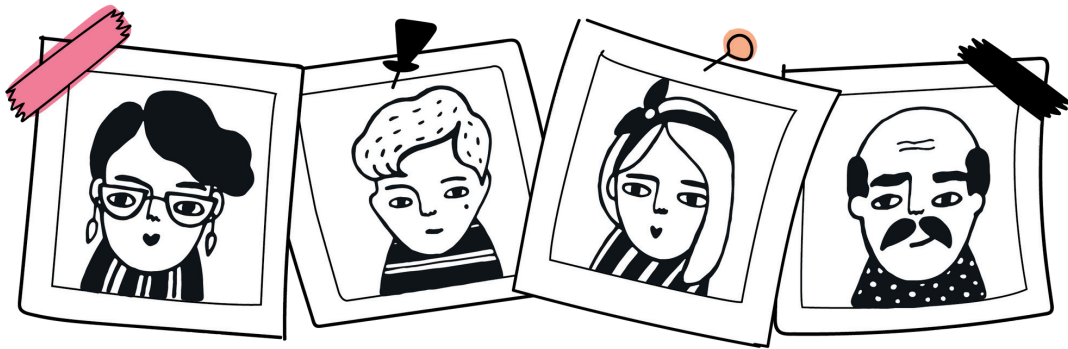




**CASE STUDY: TUTOR DOCTOR  
BIRMINGHAM & SOLIHULL'S  
PARTNERSHIP WITH  
SOLIHULL METROPOLITAN  
BOROUGH COUNCIL**





In recent years, the need for tailored educational support for students with special educational needs (SEN) and social, emotional, and mental health (SEMH) challenges has grown significantly. Solihull Metropolitan Borough Council (SMBC) recognised the limitations of the existing school environment in meeting the needs of certain students and sought a more personalised approach to education.

As part of their wider efforts to meet these needs, SMBC sought partnerships that could provide more personalised approaches to education. To help address this challenge, SMBC partnered with Tutor Doctor Birmingham & Solihull to offer one-to-one tuition and targeted support for students. This collaboration has helped students to transition back into school environments after receiving individualised support at home. This hybrid model is one that Tutor Doctor has achieved a lot of success with and promotes both academic progress and personal development.

This case study explores the challenges SMBC faced, the tailored programme developed by Tutor Doctor, and the positive outcomes of this partnership over the past two years.

## DISENGAGEMENT AND DECLINE IN A TRADITIONAL SCHOOL SETTING

Before partnering with Tutor Doctor, SMBC recognised the difficulties in meeting the needs of students with complex SEN and SEMH issues through existing provisions alone. These students, many with ADHD and ASD, found it difficult to thrive in standard classroom environments, resulting in disengagement and a decline in academic progress. The council needed to find a way to provide these students with the necessary support while also facilitating their eventual return to a school environment.

SMBC's primary goal in seeking out Tutor Doctor's services was to offer one-to-one tuition tailored to each student's specific needs. They hoped to build students' academic skills while also boosting their confidence, enabling them to reintegrate into mainstream education.

## HOW TUTOR DOCTOR ADAPTED TO THE PROBLEM

Tutor Doctor Birmingham & Solihull worked closely with SMBC to develop personalised programmes for each student referred. Central to this approach was the provision of one-to-one tuition, carefully designed to support both academic development and personal growth.

For students with ADHD and ASD, the programme incorporated academic work as well as practical activities aimed at developing motor skills and building confidence. These activities were integrated into the tutoring sessions, ensuring that each student's educational experience was both holistic and engaging.

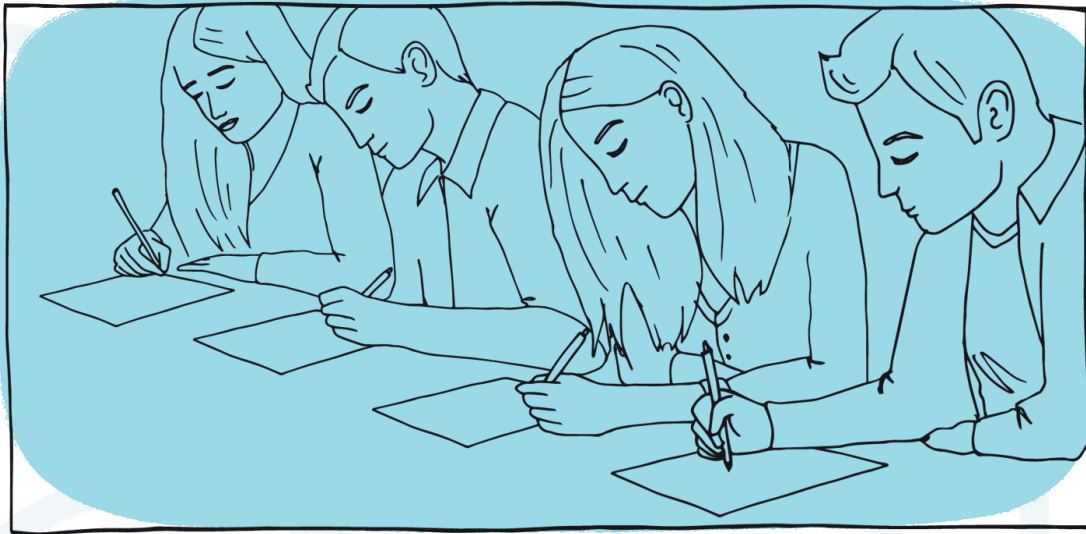
To facilitate students' eventual reintegration into school, Tutor Doctor developed a comprehensive school transition plan for each child. This plan included a hybrid model of in-home tuition and on-site tutoring at the school.

Tutor Doctor's customised plan allowed students to gradually become familiar with the structured environment of a school, helping them to feel more comfortable with the transition process and enabling them to start building relationships with peers.

## WHAT HAPPENED NEXT?

The impact of this partnership can be seen in the measurable progress made by the students supported by Tutor Doctor. One of the standout successes has been the ability of students to transition back into school environments, even if only on a part-time basis to begin with. For students who had previously struggled to engage in any school setting, this is a significant achievement.





The student's ability to enjoy a trial day at school is a direct result of the careful planning, dedicated tuition, and ongoing support provided by Tutor Doctor. The hybrid model of learning allowed the student to slowly acclimatise to the school setting, increasing their chances of long-term success.

The feedback from parents and the council has been overwhelmingly positive. SMBC has noted that Tutor Doctor's personalised approach and commitment to each student have been key factors in the success of the partnership. By meeting with families and students directly, Tutor Doctor has built strong relationships that foster trust and ensure that the specific needs of each student are understood and addressed.

A parent's testimonial encapsulates the positive impact of Tutor Doctor's work: "I just want to say thank you so much. Without Tutor Doctor this year I don't know where we would be. {Student} just had a trial day yesterday at (school) but he loved it. Not only is that due to it being the right setting, it's due to the hard work (tutor) has put in with (student). We can't thank you all enough."

This personalised approach has not only boosted students' academic skills but has also significantly improved their social confidence, making reintegration into the school environment a more achievable goal.

## THE ONGOING IMPACT OF TUTOR DOCTOR'S INFLUENCE

The success of the partnership with SMBC demonstrates the effectiveness of Tutor Doctor's tailored, one-to-one tuition model, particularly for students with SEN and SEMH challenges. By combining academic work with activities designed to support motor skills and social development, Tutor Doctor has helped students make meaningful progress both inside and outside the classroom.

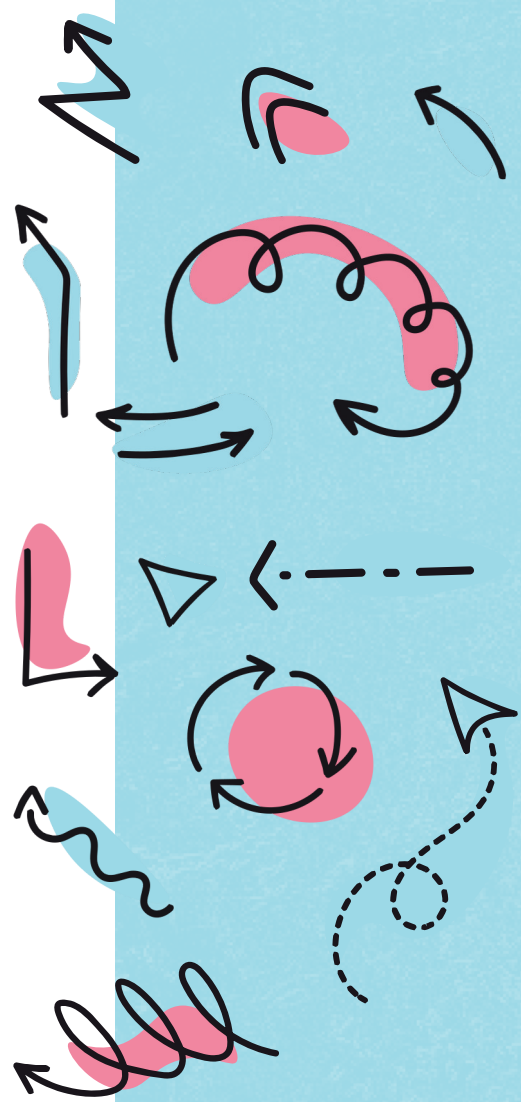
The hybrid model of in-home and school-based tuition has also proven to be highly effective in facilitating school transitions. By allowing students to gradually become comfortable in a structured environment, this model has significantly increased the chances of successful reintegration into school life.

Tutor Doctor's reputation for taking a personalised approach to each student has also been a key factor in the continued success of the partnership.

By meeting with students and their families in person, Tutor Doctor has built a strong relationship with SMBC, resulting in a steady stream of referrals across all educational stages, from early years foundation stage (EYFS) through to GCSE.







**tutor  
doctor**

How learning hits home.

[tutordocor.co.uk](http://tutordocor.co.uk)

